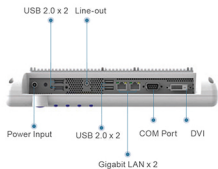
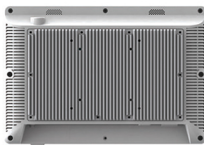


NH-121

12" Atom Slim Medical Panel PC



Features



- ◆ Intel® Atom N270 1.6GHz Processor
- ◆ 11.6" WXGA LCD with LED Backlight
- ◆ 4-wire Resistive Touch Screen
- ◆ 802.11a/b/g/n Wireless LAN (Optional)
- ◆ +12V to +24V Wide Range DC input
- ◆ CE/FCC Class B, EN/UL60601-1 Medical Certification



Specifications

Main Specifications

| | |
|------------------------|-----------------------------------|
| Processor | Intel® Atom N270 1.6 GHz |
| System Memory | Supports DDR2 SODIMM up to 2GB |
| Chipset | Intel® 945GSE + ICH7M |
| OS Support | Windows® XP, Windows® 7, Linux |
| Expansion Interface | Mini-PCI x 1 |
| Storage Disk Drive | 2.5" SATA Hard Disk Drive/SSD x 1 |
| Wireless Communication | 802.11a/b/g/n(optional) |
| Speaker | 2W x 2 |
| Power Requirement | DC 12~24V |

Display

| | |
|----------------------|--|
| Size | 11.6" |
| Resolution | 1366 x 768 |
| Max. Colors | 262K |
| Luminance | 200 nits |
| View Angle | 90°(H) / 50°(V) |
| Contrast Ratio | 500:1 |
| Back Light Life Time | 15,000 Hours |
| Touch Screen | 4-wire Resistive / 10 million activities |

I/O

| | |
|-------------|-----------------|
| USB | USB 2.0 x 4 |
| Serial Port | RS-232 x 1 |
| Ethernet | Gigabit LAN x 2 |
| Video Out | DVI-I x 1 |
| Audio | Line-out |

Mechanical and Environmental

| | |
|-----------------------|--|
| Power Consumption | Full loading :32 Watts |
| Operating Temperature | 0°C ~ 40°C(32°F ~ 104°F) |
| Storage Temperature | -20°C ~ 60°C(-4°F ~ 140°F) |
| Mounting | VESA 75/100 mm |
| Net Weight | 12.32 lb (5.6kg) |
| Certification | CE/FCC Class B, UL 60601-1, EN 60601-1 |



Czara Group